

# Bushmead Primary School



## Take One Picture

Children at Bushmead Primary School Studied the painting 'Suprised!' by Henri Rousseau and were inspired to create a variety of different pieces of Artwork



# Reception Classes

Children in Reception experimented with mixing colours to make different shades of green. They used wax crayons as the base and painted leaves over the top. Then used the top of the brush to create the vines.



RYLEA



GENESYS



HAAZIM



LIA RITA

# Reception Classes



Soufal



Eoson



Helena



Tajkeeh



Leox



rejan



SEMIPE



sophia

# Reception Classes



After a walk to collect leaves, children in Reception made leaf rubbings and then used pastels to make different coloured and shaped leaves.





# Reception Classes



# Year One

Year One each took a section of the original painting to recreate a large impression using collage, adding texture to paint and felt tips. They drew leaves using soft and hard lines.



# Year One





# Year One



# Year One



# Year Two

Year Two created clay tiles from well thought out plans.

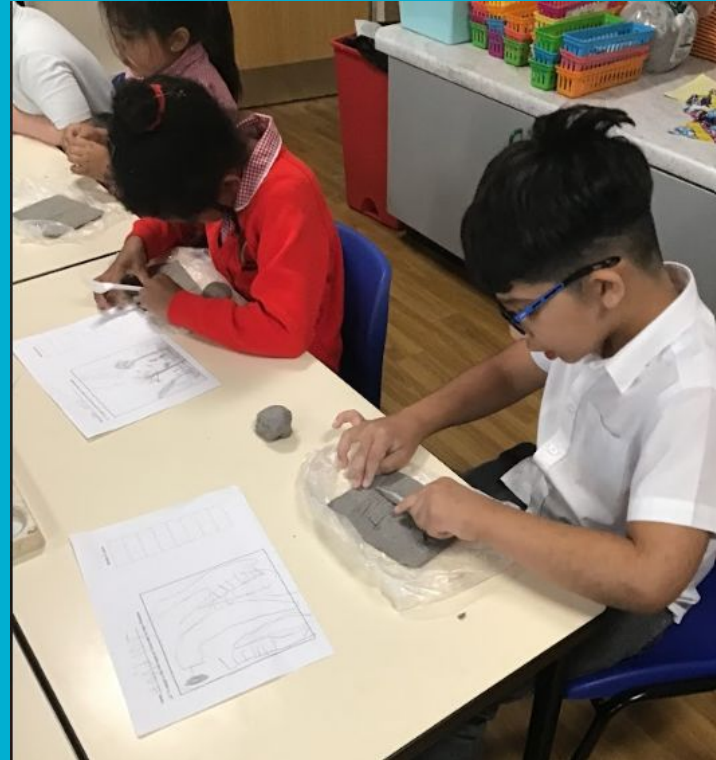
They were inspired in different ways. Some recreating the painting, others focusing on the leaf shapes and texture. Many focused on building a textured tile, rolling, kneaded, twisting and marking the clay



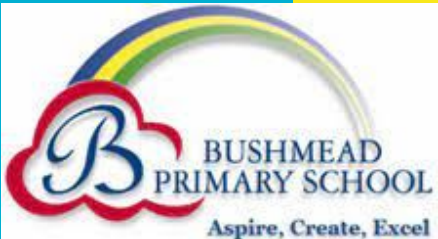
# Year Two



# Year Two



# Year Two



# Year Two



# Year Two





# Year Two

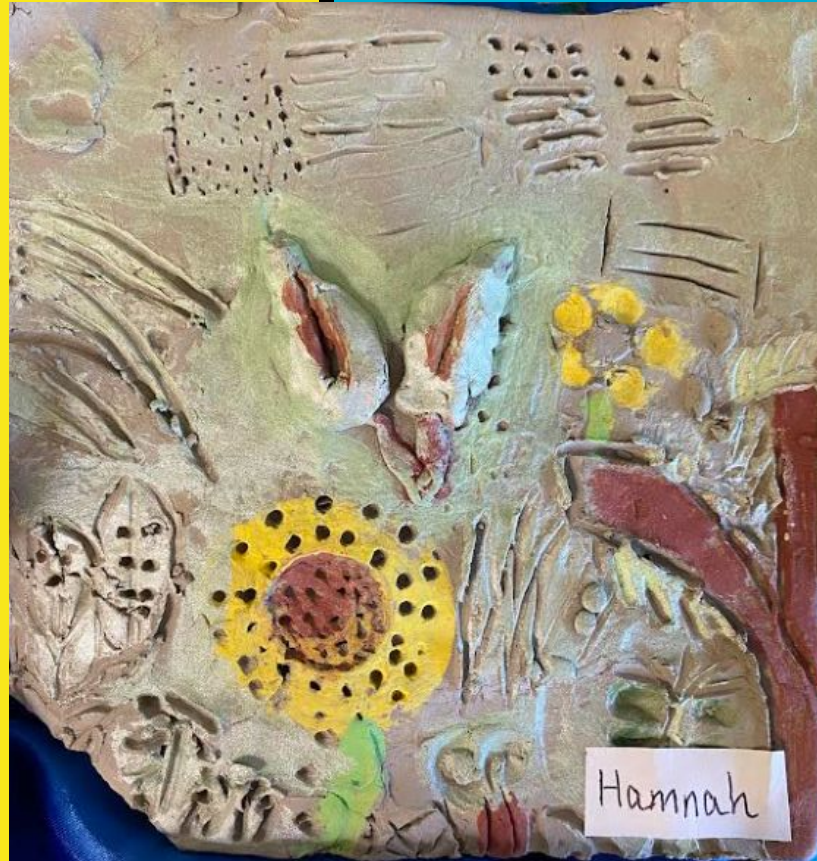




# Year Two



# Year Two



# Year Three

Year Three also took inspiration from Hokasai, painting half a tiger's face and then the other half in charcoal. They chose to create the background using a variety of collage pieces.



# Year Three



Hi come you



Diego



# Year Three



# Year Three



Emily



Emilia



Zavi



# Year Four

Year Four were inspired to use the shapes of the leaves and grass in their lino printing. At first they used a viewfinder to look carefully at the detail within the painting.



# Year Four



Khalisah



Ella



Humayl



BoKir

# Year Five

Year Five used a variety of sketching skills and some collage to recreate a small section of the painting.



Kinulha



Zaya



Suhan A



Nathama

# Year Five



Muhammad



Zakarya



Senen



Lewis

# Year Five



Julia



Hussain J



Khadiya



Andneea

# Year Five



Quratulain B



Bihandu



George



Riyan

# Year Six

Year Six used a blue watercolour wash with gradient. Then a range of greens were painted and cut out to be added as blades of grass and leaves.



Jasmine



Oliver S



Miyah W



Rugaya



William



Ayra

# Year Six



Ruby LW



Haleema



Saffaa



Enakeel



